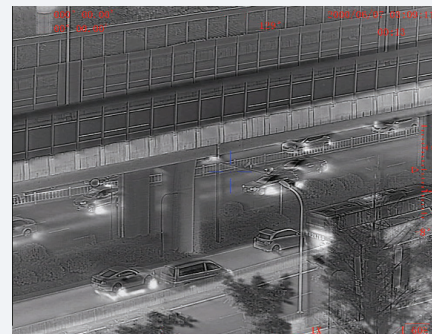


SENTINEL M (640)

LONG RANGE THERMAL BINOCULAR



Display

The SENTINEL M (640) utilizes a large diameter Germanium lens to extend its observation range beyond 2,500m. The SENTINEL M (640) is an advanced thermal imaging binocular with a wide variety of tactical, law enforcement, border security and special forces applications. The SENTINEL M (640) utilizes a high-resolution uncooled thermal sensor to perceive differences in the thermal signature of objects within the field of view. This device can detect objects at remote distances 24 hours a day, through smoke, fog or camouflage. This device does not produce any audible sounds while in operation.

Infrared sensors	
Detector type	Vox
Resolution (pixels)	640 x 512
Spectrum (µm)	8-14
Pitch size (µm)	12
NETD (mK) @F1.0	<40
Frequency (Hz)	50
Objective Focal Length (mm)	75
Field of View (°)	5.8 x4.6
Non-uniformity correction	Auto
Detection/Recognition of tank target (km)	3 / 1
Detection/ Recognition of human target (km)	2 / 0.7
Zoom	1-4x
Mechanics and environmental	
Eyepiece diopter adjustment (dpt)	±5
Internal video & photo recording	Yes
Connectivity	Power input, RS232 (remote control), USB (output videos and images), PAL video
Continuous working time (hours)	6
Dimensions with eyepiece (mm)	230x 185 x 90
Weight without battery (kg)	1.7
Power	Internal battery: rechargeable 4x18650, DC power supply 12VDC
Temperature range (°C)	-40 to +60
Storage temperature range (°C)	-50 to +65
Waterproof	MIL STD 810 (1m for 30 min)
Mechanical interface/mounts	1/4" tripod mount

Supplied with the following standard accessories:

- Soft carrying case
- 4x 18650 batteries
- Li-ion battery USB charger
- Hard carrying case
- Operation manual
- Multi-use cable