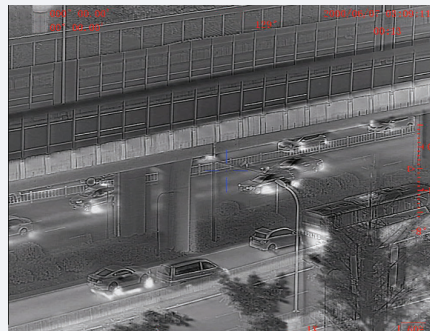


SENTINEL SMLRF

Multi-Functional LONG RANGE THERMAL BINOCULAR



Display

The SENTINEL SMLRF is the most effective handheld multi-functional thermal laser rangefinder binocular available. It serves a wide variety of tactical, law enforcement, border security and special forces applications. SENTINEL SMLRF binoculars use a high-resolution uncooled thermal sensors to perceive differences in the thermal signature of objects within the field of view. The unit can detect objects at remote distances 24 hours a day, through smoke, fog or camouflage. The unit's eye-safe laser rangefinder and digital magnetic compass instantly measure distance, azimuth and inclination of far-off targets. Data is displayed inside the field of view and can be exported via the computer output to a variety of peripheral devices.

| Infrared sensor (LWIR) | |
|---|-------------------------------------|
| Detector type | Vox |
| Resolution (pixels) | 640 x 512 |
| Spectrum (µm) | 8-14 |
| Pitch size (µm) | 12 |
| NETD (mK) @F1.0 | <40 |
| Frequency (Hz) | 50 |
| Objective Focal Length (mm) | 50 @F1.0 |
| Field of View (°) | 8.8 x 7.0 |
| Non-uniformity correction | Auto |
| Detection/Recognition of tank target (km) | 6.3/1.6 |
| Detection/ Recognition of human target (km) | 2.3/0.6 |
| Zoom | 1-4x |
| SWIR | |
| Objective Focal Length (mm) | 50 |
| Resolution (pixels) | 640x512 |
| Frequency (Hz) | 50 |
| Field of View (°) | 8.8 x 7 |
| Zoom | 1-4x |
| Spectrum (µm) | 0.9 - 1.7 |
| LRF | |
| Laser type | Semiconductor laser, Class I |
| Laser wavelength (µm) | 1,550 |
| Detection range (m) | 20 - 5,000, (20 - 10,000 Optional) |
| Ranging accuracy (m) | ±2 |
| GPS | |
| Type | GPS, Galileo (GNSS) |
| Target locating error | ±5M (target<1km) |
| Format | Lat/Long and MGRS |
| Fusion | |
| Combining day and thermal image | Yes |
| Fusion modes | At least 3 modes of image combining |

SENTINEL SMLRF

Multi-Functional LONG RANGE THERMAL BINOCULAR



| Magnetic compass | |
|----------------------------------|--|
| Azimuth resolution/accuracy | 1° / 1° |
| Elevation resolution/accuracy | 1° / 1° |
| Elevation range | +/- 80° |
| Mechanics and environmental | |
| Interpupillary distance (mm) | 64 |
| Eyeiece diopter adjustment (dpt) | ±5 |
| Internal video & photo recording | Yes |
| Connectivity | Power input, RS232 (remote control), USB (output videos and images), PAL video |
| Continuous working time (hours) | 4 |
| Dimensions with eyepiece (mm) | 170 x 210 x90 |
| Weight without battery (kg) | Max 2kg |
| Power | Internal battery: rechargeable 4x18650, DC power supply 12VDC |
| Temperature range (°C) | -30 to +60 |
| Storage temperature range (°C) | -35 to +65 |
| Waterproof | MIL STD 810 (1m for 30 min) |
| Mechanical interface/mounts | 1/4" tripod mount |

DELIVERY SET

Supplied with the following standard accessories:

- Soft carrying case
- 4x 18650 batteries
- Li-ion battery USB charger
- Hard carrying case
- Operation manual
- Multi-use cable

