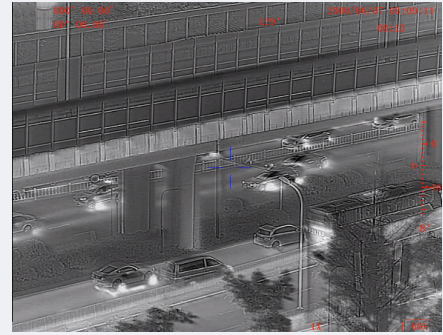


SENTINEL MLRF I

Multi-Functional LONG RANGE THERMAL BINOCULAR



Display

The SENTINEL MLRF I is the most effective handheld multi-functional thermal laser rangefinder binocular available. It serves a wide variety of tactical, law enforcement, border security and special forces applications. SENTINEL MLRF I binoculars use a high-resolution uncooled thermal sensor to perceive differences in the thermal signature of objects within the field of view. The unit can detect objects at remote distances 24 hours a day, through smoke, fog or camouflage. The unit's eye-safe laser rangefinder and digital magnetic compass instantly measure distance, azimuth and inclination of far-off targets. Data is displayed inside the field of view and can be exported via the computer output to a variety of peripheral devices.

Infrared sensors	
Detector type	Vox
Resolution (pixels)	640 x 512
Spectrum (µm)	8-14
Pitch size (µm)	12
NETD (mK) @F1.0	<40
Frequency (Hz)	50
Objective Focal Length (mm)	100
Field of View (°)	4.4 x 3.5
Non-uniformity correction	Auto
Detection/ Recognition of human target (km)	3.9 / 1.4
Zoom	1-4x
Day channel	
Resolution (pixels)	1920x1080
Frequency (Hz)	30
Field of View (°)	4.4 x 3.5
Zoom	1-4x
LRF	
Laser type	Semiconductor laser, Class I
Laser wavelength (µm)	1,550
Detection range (m)	30 - 7,000
Ranging accuracy (m)	±2
Laser pointer	
Wavelength (nm)	850 (IR)
GPS	
Type	GPS, Galileo (GNSS)
Target locating error	±10M (target<1 km)
Format	Lat./Long and MGRS
Fusion	
Combing day and thermal image	Yes
Fusion modes	At least 3 modes of image combining

SENTINEL MLRF I

Multi-Functional LONG RANGE THERMAL BINOCULAR



Magnetic compass	
Azimuth resolution/accuracy	1° / 1°
Elevation resolution/accuracy	1° / 1°
Elevation range	+/- 80°
Mechanics and environmental	
Interpupillary distance (mm)	64
Eyeiece diopter adjustment (dpt)	±5
Internal video & photo recording	Yes
Connectivity	Power input, RS232 (remote control), USB (output videos and images), NTSC video, BLE
Continuous working time (hours)	6
Dimensions (mm)	190 x 198 x 85
Weight without battery (kg)	< 2
Power	Internal battery: rechargeable 4x18650, DC power supply 12-24DC
Temperature range (°C)	-32 to +60
Storage temperature range (°C)	-35 to +65
Waterproof	MIL STD 810 (1m for 30 min)
Mechanical interface/mounts	1/4' tripod mount
Wi-Fi	Optional

DELIVERY SET

Supplied with the following standard accessories:

- Soft carrying case
- 4x 18650 batteries
- Li-ion battery USB charger
- Hard carrying case
- Operation manual
- Multi-use cable

