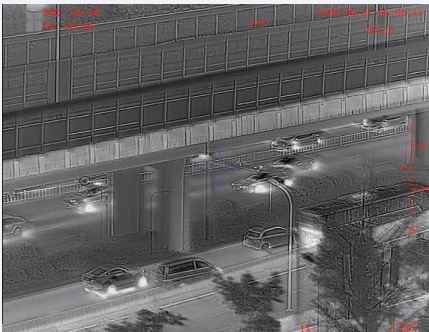


# SENTINEL MLRF

Multi-Functional LONG RANGE THERMAL BINOCULAR



Display

The SENTINEL MLRF is the most effective handheld multi-functional thermal laser rangefinder binocular available. It serves a wide variety of tactical, law enforcement, border security and special forces applications. SENTINEL MLRF features various image observation modes, ultra-long-range observation, precise target positioning and guidance with eye-safe laser rangefinder and digital magnetic compass, image capture, video recording, and real-time data transmission, and efficiently aids users in conducting on-site investigations, target searches, and information feedback tasks. Data is displayed in the field of view and can be exported to a variety of peripheral devices.

Infrared sensors	
Detector type	Vox
Resolution (pixels)	640 x 512
Spectrum (µm)	8-14
Pitch size (µm)	12
NETD (mK) @F1.0	<40
Frequency (Hz)	50
Objective Focal Length (mm)	50 @F1.0
Field of View (°)	8.8 x 7.0
Non-uniformity correction	Auto
Detection/Recognition of tank target (km)	6.3/1.6
Detection/ Recognition of human target (km)	2.3/0.6
Zoom	1-4x
Day channel	
Objective Focal Length (mm)	35
Eyepiece Focal Length (mm)	13.9
Resolution (pixels)	1280x1024
Frequency (Hz)	30
Field of View (°)	12.4 x 7.0
Zoom	1-4x
LRF	
Laser type	Semiconductor laser, Class I
Laser wavelength (µm)	1,550
Detection range (m)	20 - 7,000, (20 - 10,000 Optional)
Ranging accuracy (m)	±2
Laser pointer	
Wavelength (nm)	850 (IR)
GPS	
Type	GPS, Galileo (GNSS)
Target locating error	±5M (target<1km)
Format	Lat/Long and MGRS
Fusion	
Combing day and thermal image	Yes

# SENTINEL MLRF

Multi-Functional LONG RANGE THERMAL BINOCULAR



Magnetic compass	
Azimuth resolution/accuracy	1° / 1°
Elevation resolution/accuracy	1° / 1°
Elevation range	+/- 80°
Mechanics and environmental	
Interpupillary distance (mm)	64
Eyepiece diopter adjustment (dpt)	±5
Internal video & photo recording	Yes
Connectivity	Power input, RS232 (remote control), USB (output videos and images), PAL video
Continuous working time (hours)	4
Dimensions with eyepiece (mm)	160 x 190 x 85
Weight without battery (kg)	1.45
Power	Internal battery: rechargeable 4x18650, DC power supply 12VDC
Temperature range (°C)	-30 to +60
Storage temperature range (°C)	-35 to +65
Waterproof	MIL STD 810 (1m for 30 min)
Mechanical interface/mounts	1/4" tripod mount

## DELIVERY SET

Supplied with the following standard accessories:

- Soft carrying case
- 4x 18650 batteries
- Li-ion battery USB charger
- Hard carrying case
- Operation manual
- Multi-use cable



105 Sparks Ave., Toronto, ON, M2H 2S5 Canada

[newconsales@newcon-optik.com](mailto:newconsales@newcon-optik.com), [www.newcon-optik.com](http://www.newcon-optik.com)

Specifications, visuals, descriptions, and technical data are non-binding and may be changed without notice - 2024-01-06

©2024 Newcon Optik - All rights reserved